

Year End Report for Canada Gives

Presented by

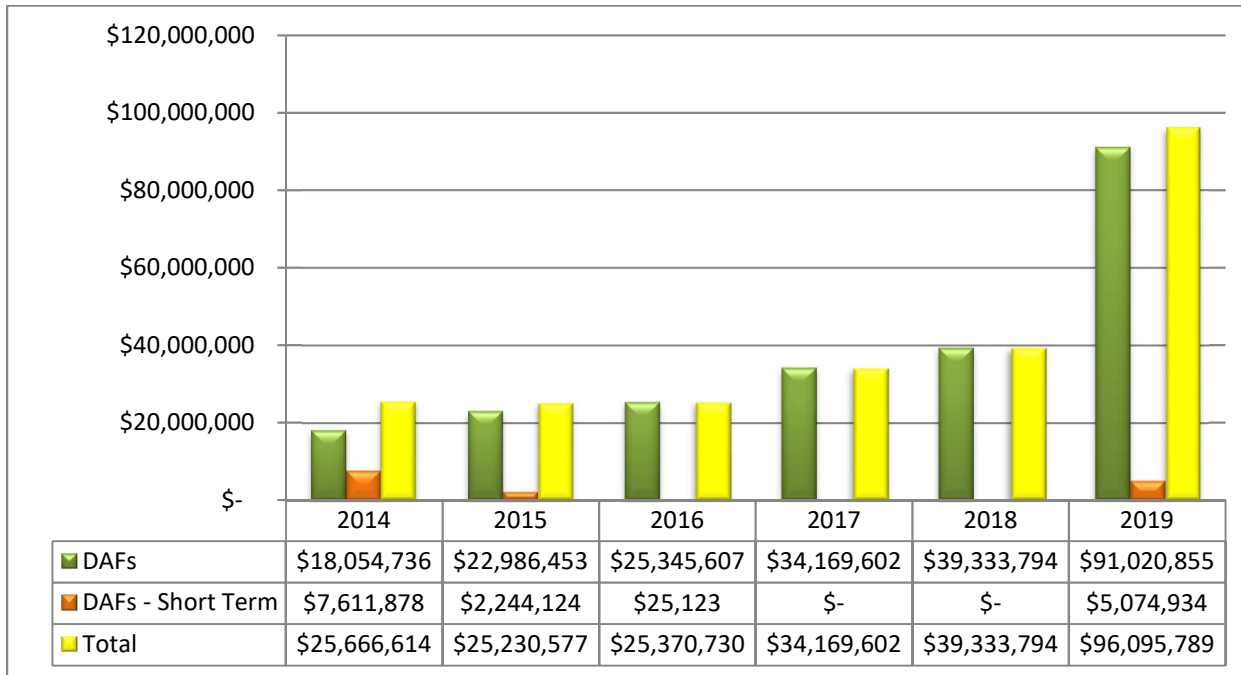
Lindsay Langlois, CPA, CA
Partner



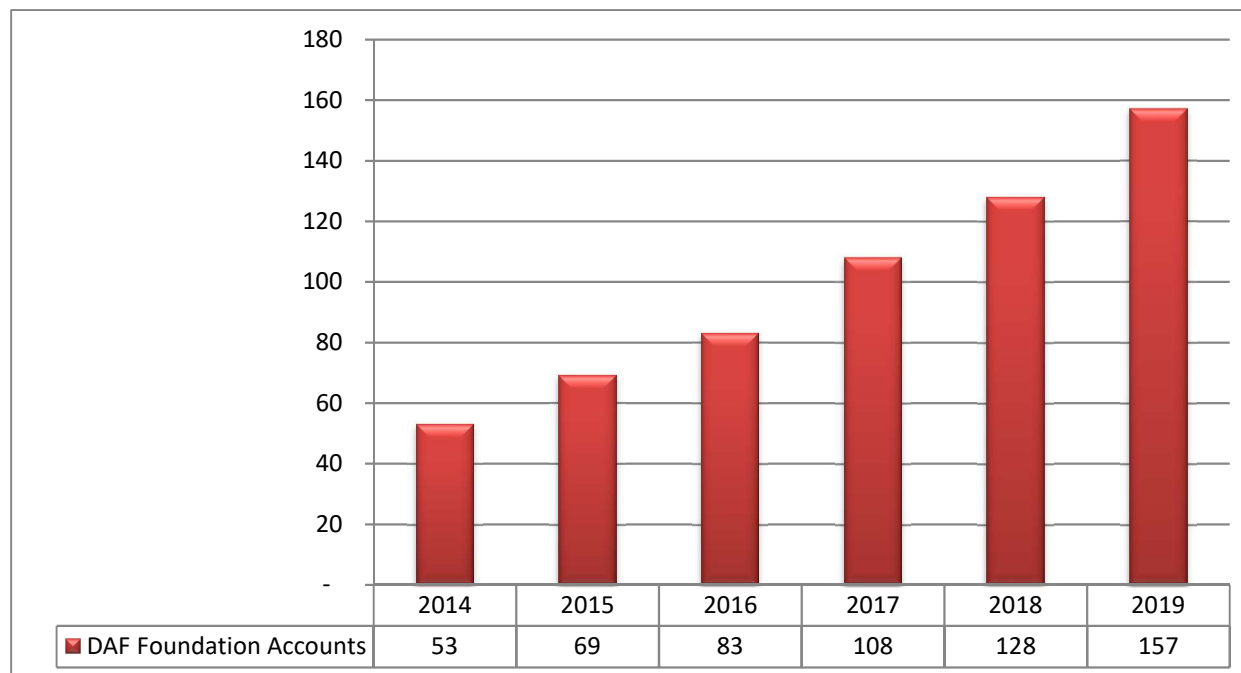
CONTENTS

<i>Key Performance Results</i>	2-5
<i>Five Year Unrestricted Expense Analysis</i>	6
<i>Expense Breakdown Percentage (Tax Return)</i>	7
<i>Five Year Restricted Funds Expense Analysis</i>	7

DONOR ADVISED FUNDS (DAFs) - FOUNDATION ACCOUNTS

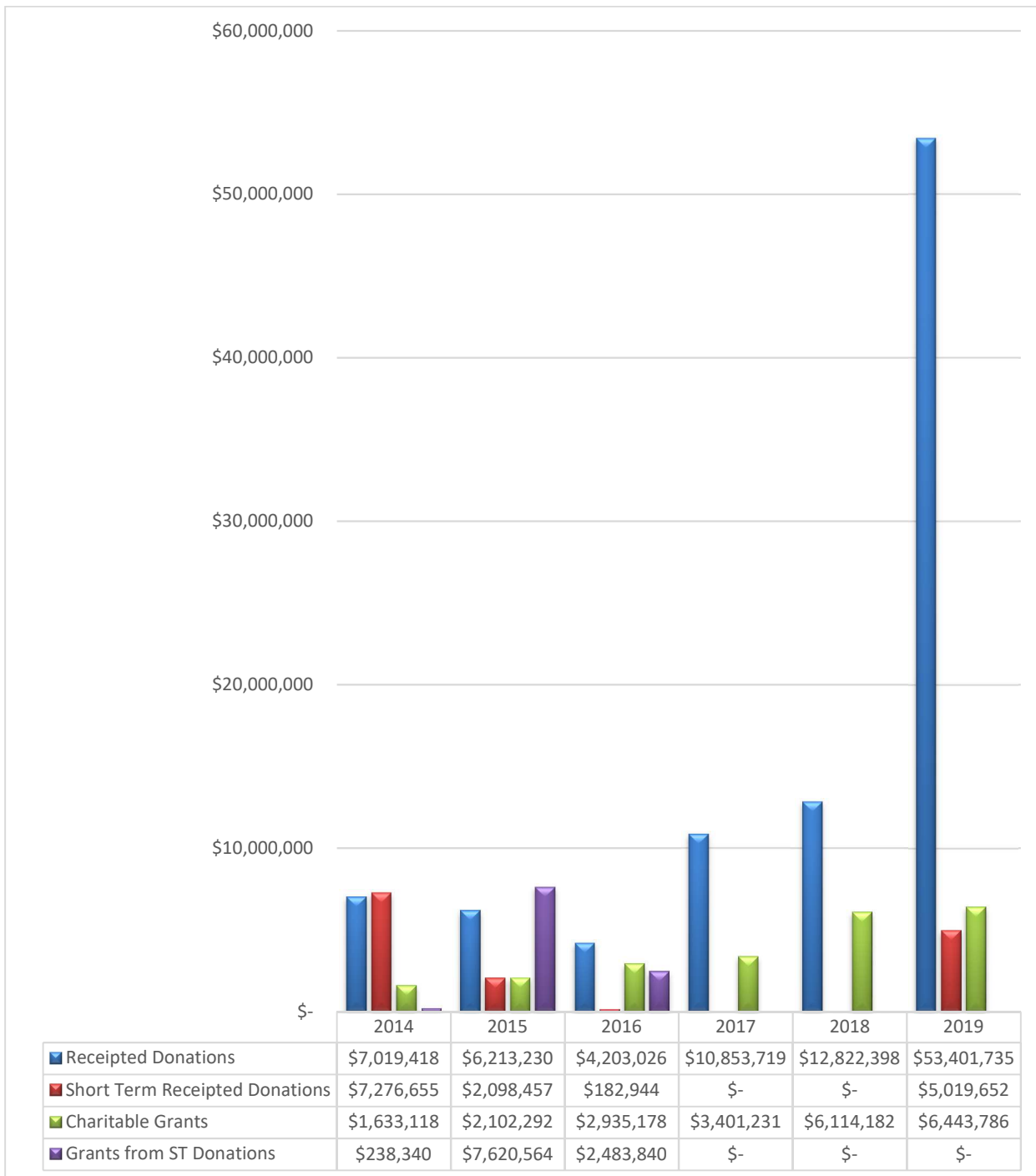


OF (DAF) FOUNDATION ACCOUNTS



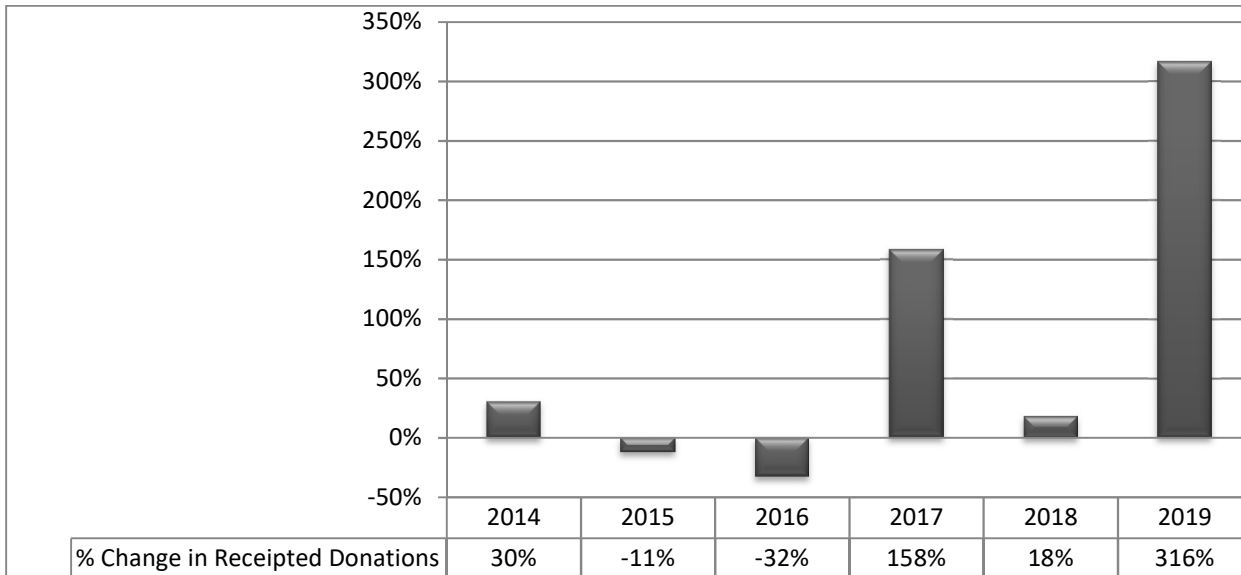
The information contained in this report has been summarized from the financial statements of Canada Gives and has not been subject to verification. It is intended for discussion purposes only.

RECEIPTED DONATIONS VS CHARITABLE GRANTS

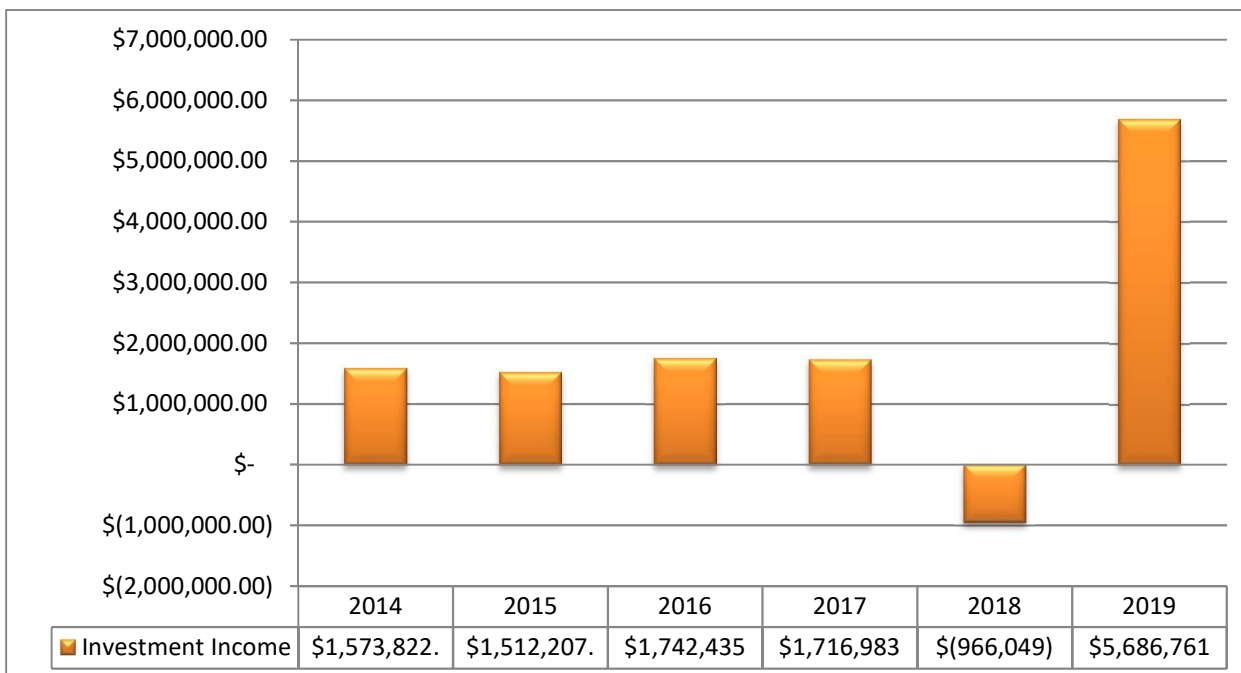


The information contained in this report has been summarized from the financial statements of Canada Gives and has not been subject to verification. It is intended for discussion purposes only.

% (DECREASE) INCREASE IN RECEIPTED DONATIONS

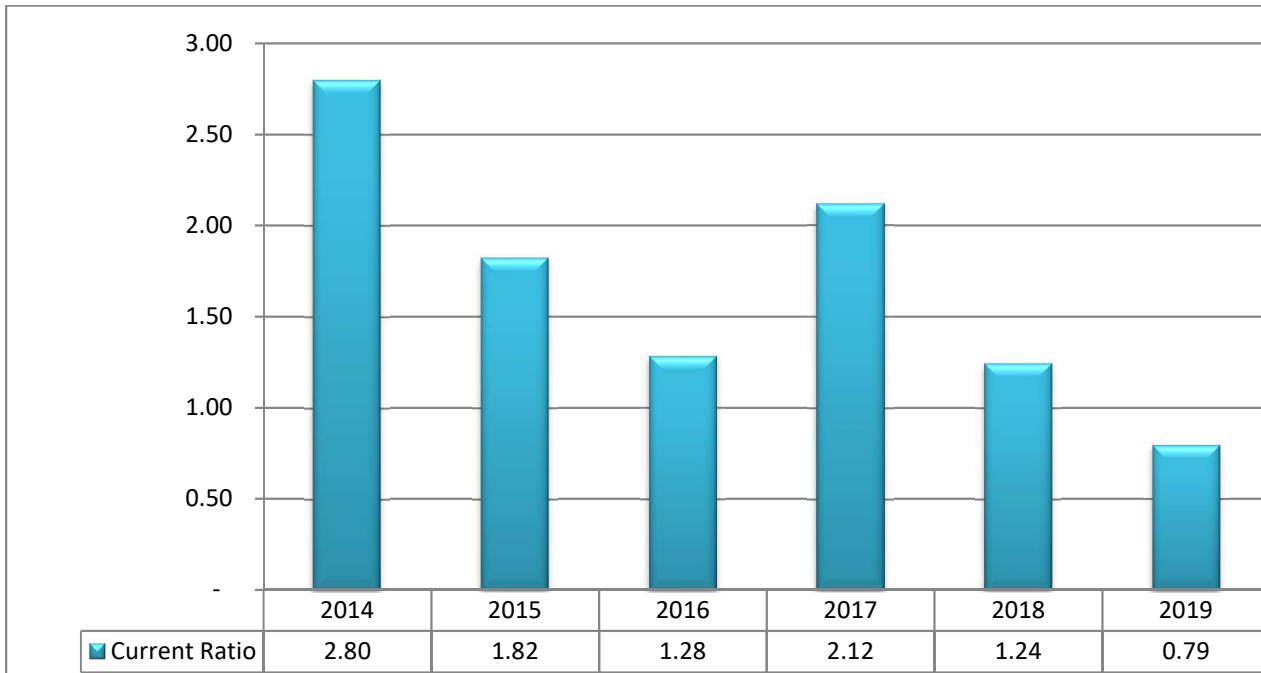


INVESTMENT INCOME

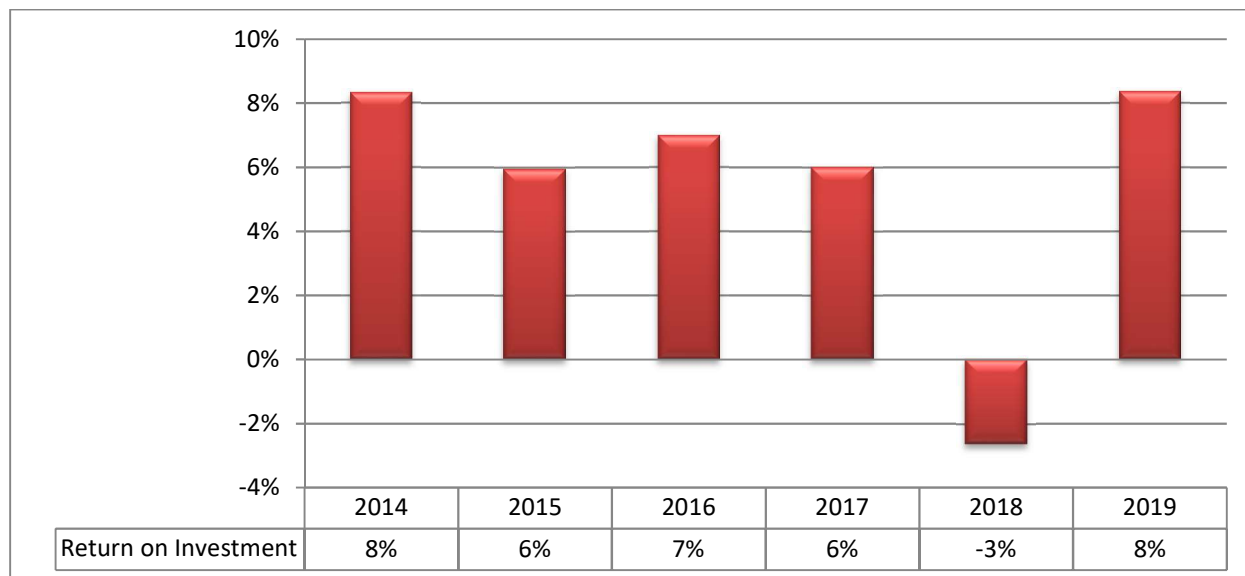


The information contained in this report has been summarized from the financial statements of Canada Gives and has not been subject to verification. It is intended for discussion purposes only.

CURRENT RATIO

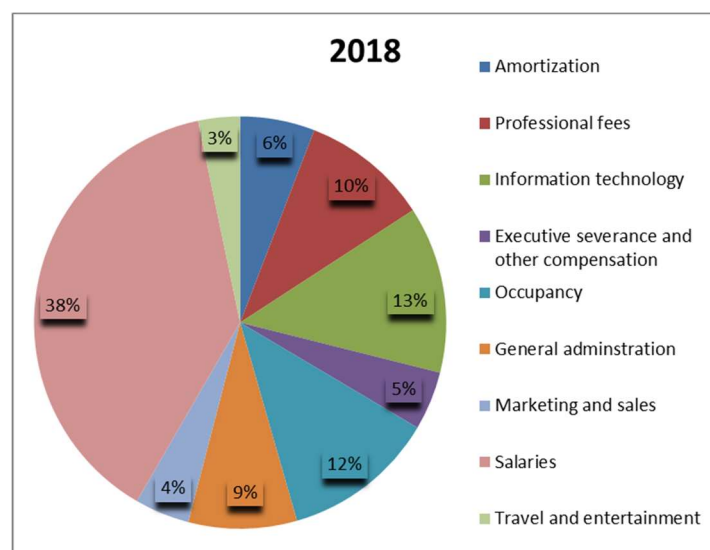
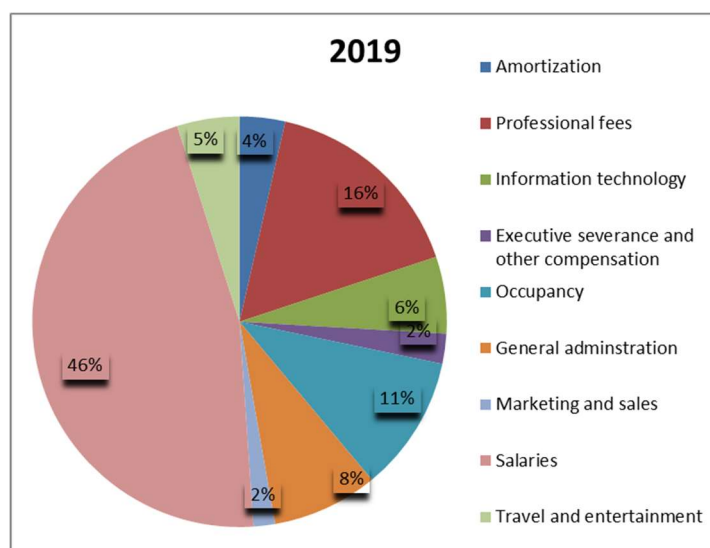


RETURN ON INVESTMENTS



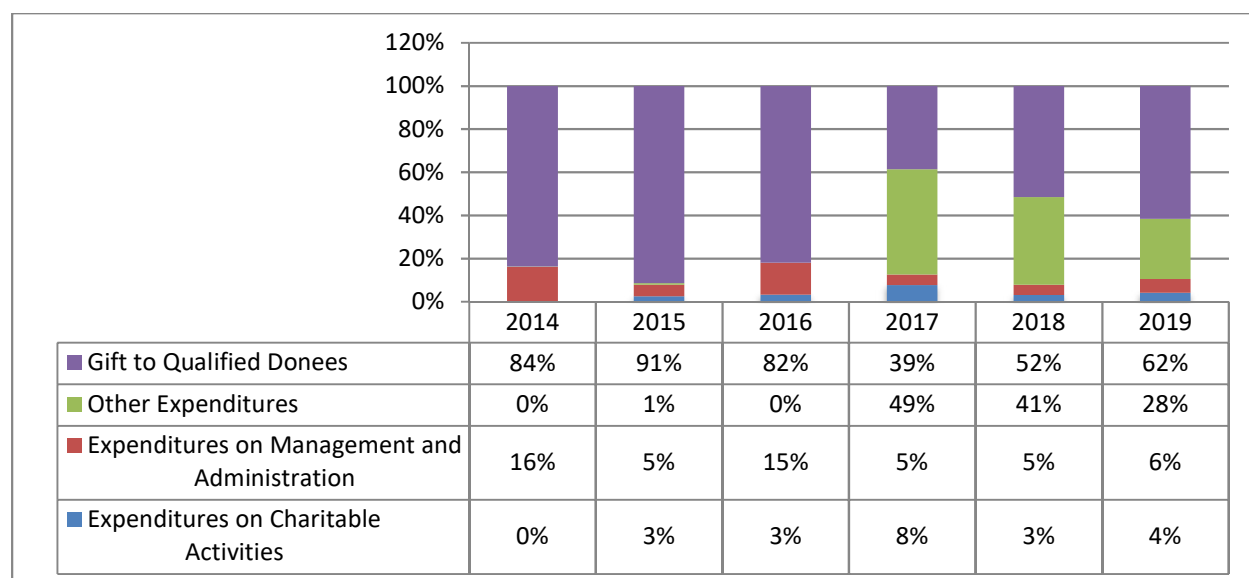
FIVE YEAR UNRESTRICTED OPERATING EXPENSE SUMMARY

Unrestricted Expenses	2019	2018	2017	2016	2015
Operating Expenses:					
Amortization	25,278	32,419	33,060	25,221	16,840
Professional fees	116,277	55,151	55,215	46,075	60,862
Information technology	43,022	72,350	25,629	7,300	81,374
Executive severance and other compensation	16,851	25,459	17,903	14,361	15,571
Occupancy	76,030	66,624	54,445	56,695	51,856
General administration	58,895	47,051	30,026	56,132	45,677
Marketing and sales	11,912	23,739	8,163	5,559	3,164
Salaries	328,946	212,301	198,382	206,560	169,226
Travel and entertainment	34,622	18,127	18,595	14,355	16,874
Total	711,833	553,221	441,418	432,258	461,443



The information contained in this report has been summarized from the financial statements of Canada Gives and has not been subject to verification. It is intended for discussion purposes only.

EXPENSE BREAKDOWN PERCENTAGE (TAX RETURN)



RESTRICTED FUNDS EXPENSE SUMMARY

Restricted Expenses	2019	2018	2017	2016	2015
Account administration	649,072	493,967	400,377	307,608	323,465
Foreign charitable activities	117,926	60,735	378,583	206,672	267,083
Information technology		-	-	9,500	-
Investment management fees	320,911	303,733	287,812	252,980	174,917
Insurance premiums	2,910,154	4,825,884	4,296,411	-	-
General administration	18	80	266	-	2,262
Professional Fees	3,500	2,100	-	-	-
Total	4,001,581	5,686,499	5,363,449	776,760	767,727

The information contained in this report has been summarized from the financial statements of Canada Gives and has not been subject to verification. It is intended for discussion purposes only.